

SIGHT GLASSES



FOR PROCESS INDUSTRIES



GENERAL

BeeKay has now come out with the full series of all types of flow glasses to suit every application in the chemical industry. The standard types are given in the literature, while your special requirements shall be attended individually by our engineers.

FSG 110

BeeKay Flow Glasses are assembled with tubular glass. Simple in construction and are used for checking flow from any direction where various valves or pumps might have to be operated based on the flow in the line. These are recommended where there is no mechanical strain in the pipe line



FULL VIEW FLOW GLASS

Specifications

Pressure	: 10 Kg/cm ²
Packing Flange	: Aluminium
Bolts	: High Tensile Steel
Sizes	: 1/2" to 8"
Connection	: Flange to ASA 150/300 BS 10 or DIN Standards and Screwed BSP / NPT



FSG 120

This is same as Model 110 in construction except that it has drip-tube so that vertical flows and colourless flows can be detected due to the disturbance in the flow pattern



FSG 300

BeeKay Designed to meet many requirements where the straight line indicators are not suitable. The sight flow indicator can be furnished with or without a drip - tube which is brought into the centre area of the window for easier observations.

DOUBLE WINDOW SIGHT GLASS

Specifications:

Main Body	: MS,CS,SS 304,SS 316,CI
Cover Plate	: MS,CI
Glass	: Toughened Borosilicate, Pyrex
Gasket	: Compressed asbestos standard teflon optional

Connection	: Screwed BSP, NPT and Flanged ASA, BS, DIN
Size Available	: 1/2" to 12"
Flapper/ Wheel Material	: Al, SS, PVC
Pressure	: 15 Kg/cm ²

FSG 210

BeeKay Sight Glasses are assembled with 2 nos of circular flat glasses on either side of a slotted main body of specified material. These flow indicators are best adapted to vertical downward flow. These models are Particularly useful in distillation and similar apparatus where flow is apt to be intermittent. They are disgned without any o bstruction to handle the intermittent flow as well as full flow can be supplied with or without drip-tube as per requirement



FSG 220

BeeKay Sight Flow Indicators are identical construction to FSG 210 except that these are fitted with flappers to indicate flow. These flow indicators are recommended for both horizontal pipe lines and vertical pipe lines with upward flow. These units are best suited to transparent or slightly opaque solutions and are also used for gages. Position of th flapper indicates flow. One important use of the flow indicators is, in lines where downstream valve may closed and even though the flow glass is full there may not be any flow. In that case flapper postion alone can indicate whether there is flow or not.

Example : Cooling water flow bearings may be stopped by a human error of closing a downstream valve only the flapper can indicate the real situation.



FSG 230

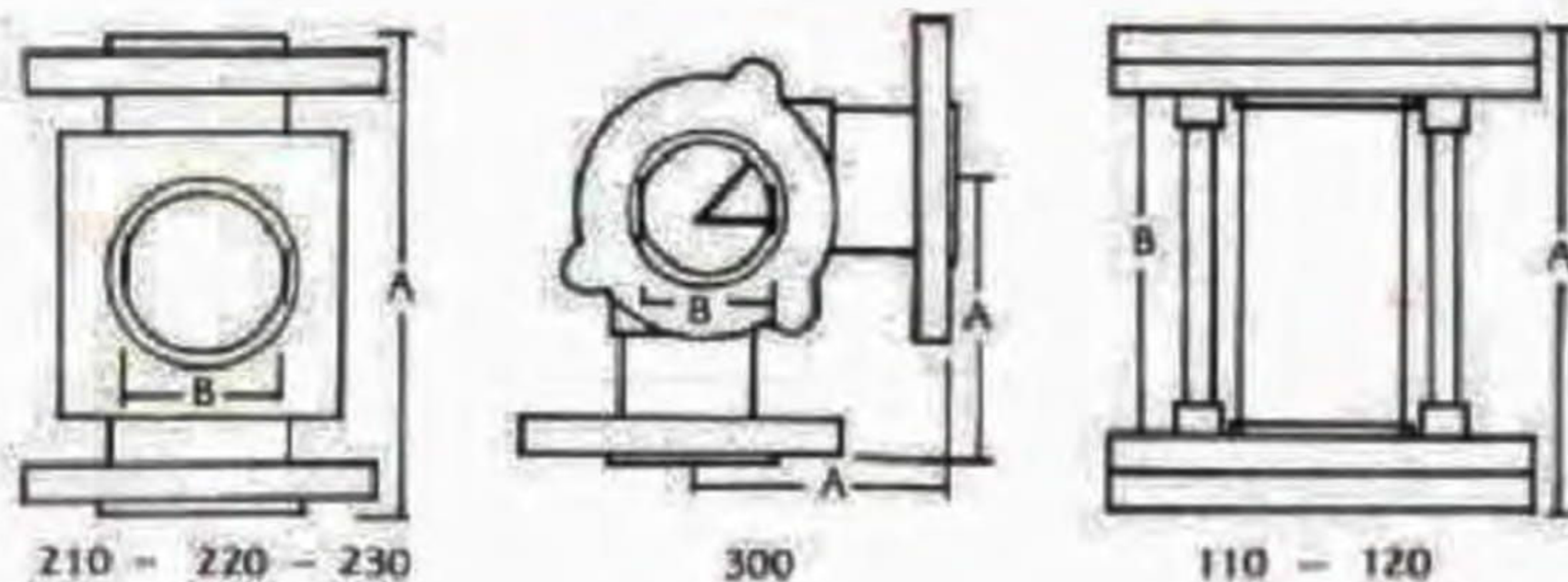
BeeKay Sight Flow Indicators with rotating paddle / wheel are suitable for installation in any position, but are particularly adapted to pipelines carrying dark opaque solutions, where the motion of the wheel is easily detected. This model is equally adapted to transparent solution and gases. These indicators are mostly installed in places where observations must be made from a distance.



FSG 240

These Sight Flow Indicators are having a kite which rotates whenever flow takes places. The pressure drops are very small compared to rotating wheel types . These can be mounted in any direction.

DIMENSIONAL DATAS



SFI - Model 210 - 220 - 230

FSG-Model 110 & 120

FSG-Model - 300

Size	A(mm)	B(mm)	Size	A(mm)	B(mm)	Size	A(mm)	B(mm)
1/2"	149	31	1/2"	65	50	1/2"	100	25
3/4"	100	65.2	3/4"	65	50	3/4"	100	25
1"	152	65.2	1"	65	50	1"	100	40
1 1/2"	140	50.2	1 1/2"	65	50	1 1/2"	115	50
2"	152	65.2	2"	65	50	2"	127	70
3"	195	65.2	3"	115	75	3"	152	95
4"	255	100	4"	140	100	4"	171	100
6"	285	140	6"	190	150	6"	184	127
8"	335	225	8"	264	200			

OTHER PRODUCTS

- * Level Indicators and Level Gauges
- * Level Switches and Level Controllers
- * Sight Glasses and Sight flow Indicators
- * Safety Valves and Pressure Relief Valves
- * Heat Resistance Glasses and Peep Hole Glasses
- * Strainers and Filters
- * Ball Float Valves
- * Flame Arrestores